

# West Virginia Broadband Mapping Program

## Region 1 - Maximum Upload Speed, Wireline

Data as of 6/30/2014

### Publications Policy:

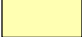




This publication represents interpretations of best available data made by professional geographers. As in all research work, professional interpretations may vary, and can change with advancements in both technology and data quality. This publication is offered as a service of the State of West Virginia; proper use of the information herein is the sole responsibility of the user.

Permission to reproduce this publication is granted if acknowledgement is given to the West Virginia Geological and Economic Survey.

Map Date: January 29, 2016  
Projection: Transverse Mercator  
Horizontal Datum: NAD 83  
Coordinate System: UTMz17n  
Map scale for full 8.5" x 11" display: 1:800,000


### Legend


#### Max Upload Speed, Wireline

-  200 kbps - 768 kbps
-  768 kbps - 3 mbps
-  3 mbps - 10 mbps
-  10 mbps - 25 mbps
-  Greater than 25 mbps

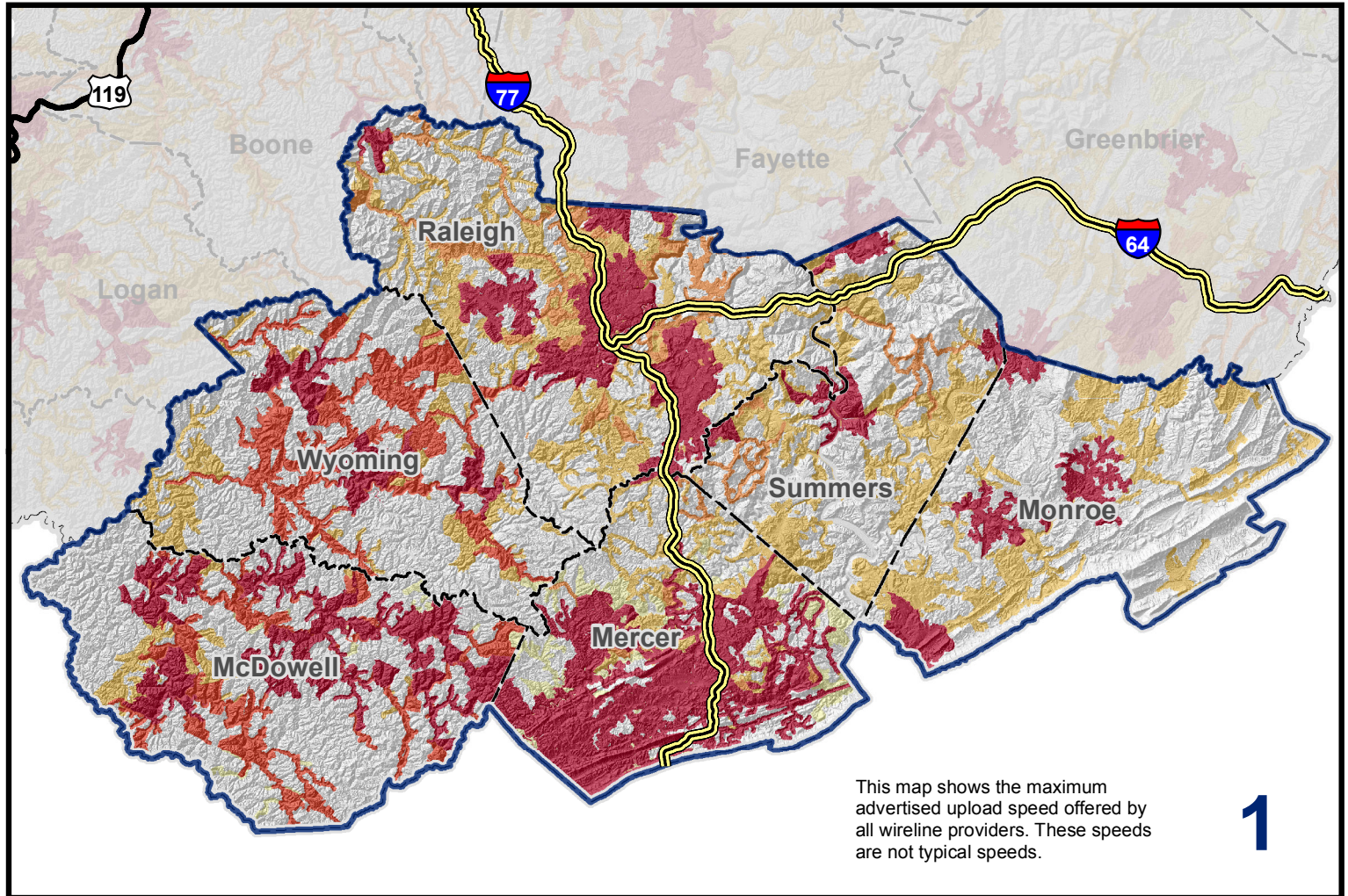
 Commerce Planning & Development Regions

 State Boundary

 Counties

 Interstates

 US Highways

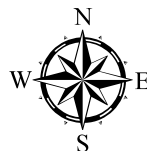


This map shows the maximum advertised upload speed offered by all wireline providers. These speeds are not typical speeds.

# 1



West Virginia Geological and Economic Survey  
Mont Chateau Research Center  
1 Mont Chateau Road  
Morgantown, WV 26508-8079  
Phone: (304) 594-2331  
[www.wvgs.wvnet.edu](http://www.wvgs.wvnet.edu)



[www.wvbroadbandmap.org](http://www.wvbroadbandmap.org)

