

West Virginia Broadband Mapping Program Region 3 - Maximum Upload Speed, Wireless

Data as of 6/30/2014

Publications Policy:

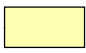


This publication represents interpretations of best available data made by professional geographers. As in all research work, professional interpretations may vary, and can change with advancements in both technology and data quality. This publication is offered as a service of the State of West Virginia; proper use of the information herein is the sole responsibility of the user.


Permission to reproduce this publication is granted if acknowledgement is given to the West Virginia Geological and Economic Survey.

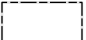
Map Date: January 29, 2016
Projection: Transverse Mercator
Horizontal Datum: NAD 83
Coordinate System: UTMz17n
Map scale for full 8.5" x 11" display: 1:750,000

Legend

Maximum Upload Speed, Wireless


-  200 kbps - 768 kbps
-  768 kbps - 3 mbps
-  3 mbps - 10 mbps

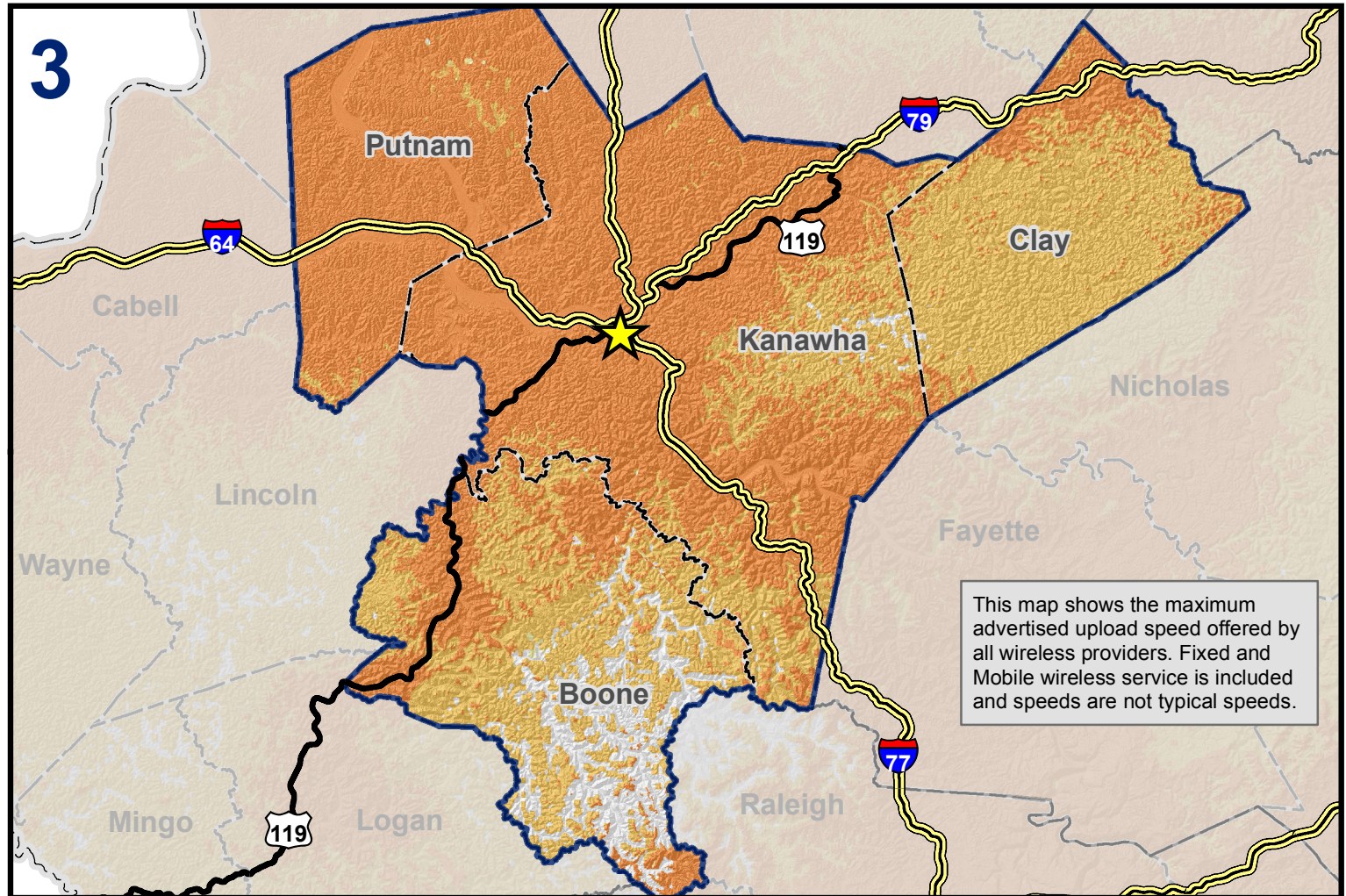
 Commerce Planning and Development Regions

 Counties

 Interstates

 US Highways

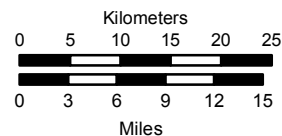
 Charleston



This map shows the maximum advertised upload speed offered by all wireless providers. Fixed and Mobile wireless service is included and speeds are not typical speeds.



West Virginia Geological and Economic Survey
Mont Chateau Research Center
1 Mont Chateau Road
Morgantown, WV 26508-8079
Phone: (304) 594-2331
www.wvgs.wvnet.edu



www.wvbroadbandmap.org

