

West Virginia Broadband Mapping Program

Region 6 - Maximum Download Speed, Wireline

Data as of 6/30/2014

Publications Policy:







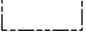


This publication represents interpretations of best available data made by professional geographers. As in all research work, professional interpretations may vary, and can change with advancements in both technology and data quality. This publication is offered as a service of the State of West Virginia; proper use of the information herein is the sole responsibility of the user.

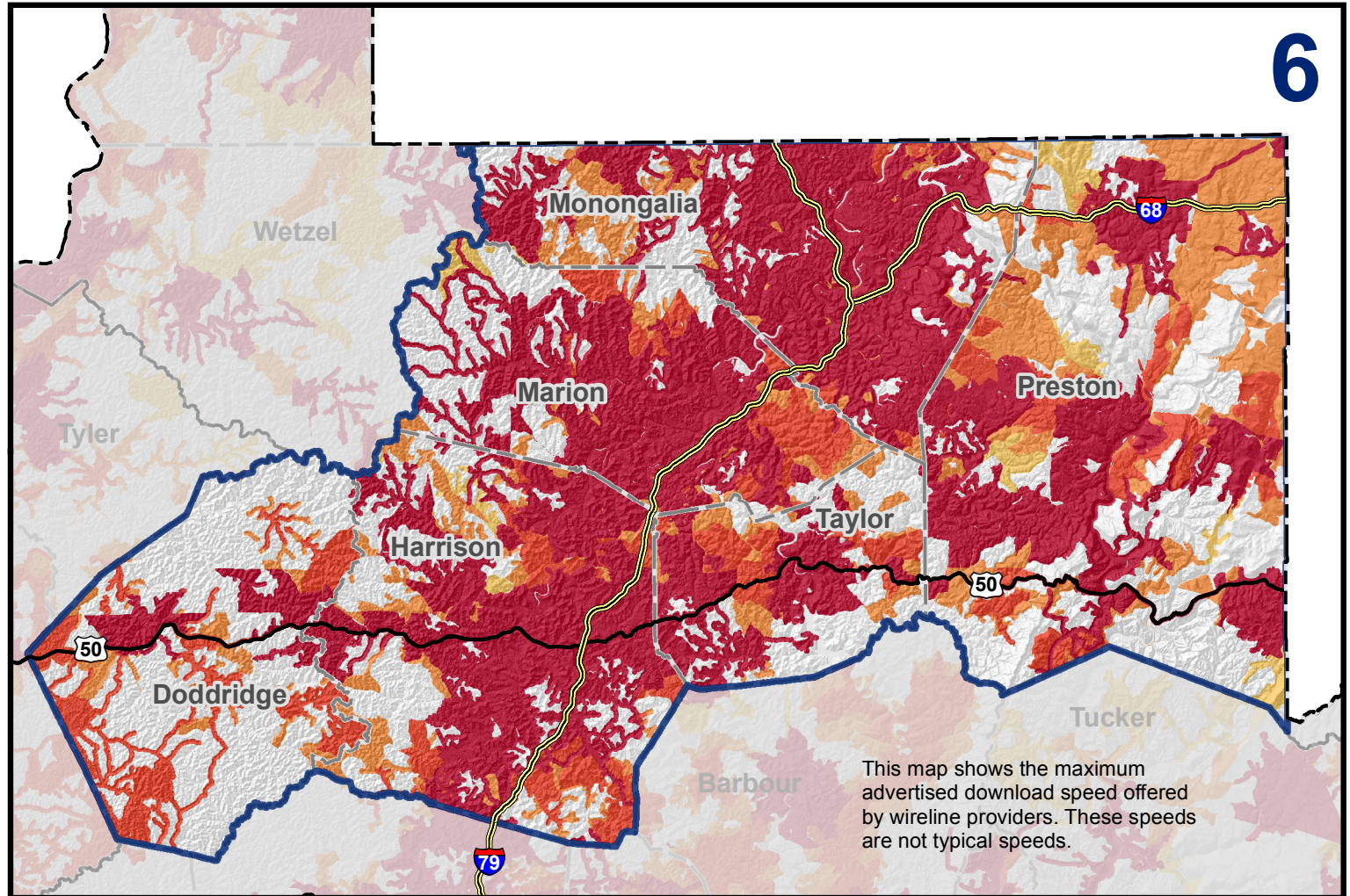
Permission to reproduce this publication is granted if acknowledgement is given to the West Virginia Geological and Economic Survey and the West Virginia Broadband Mapping Program.

Map Date: January 29, 2016
Projection: Transverse Mercator
Horizontal Datum: NAD 83
Coordinate System: UTMz17n
Map scale for full
8.5" x 11" display: 1:650,000

Legend

Max Download Speed, Wireline

-  768 kbps - 3 mbps
-  3 mbps - 10 mbps
-  10 mbps - 25 mbps
-  Greater than 25 mbps
-  Commerce Planning & Development Regions
-  State Boundary
-  Counties
-  Interstates
-  US Highways



This map shows the maximum advertised download speed offered by wireline providers. These speeds are not typical speeds.

www.wvbroadbandmap.org



West Virginia Geological and Economic Survey
Mont Chateau Research Center
1 Mont Chateau Road
Morgantown, WV 26508-8079
Phone: (304) 594-2331
www.wvgs.wvnet.edu

