

# West Virginia Broadband Mapping Program Region 7 - Technology: Mobile Wireless

Data as of 3/31/2012

### Publications Policy:

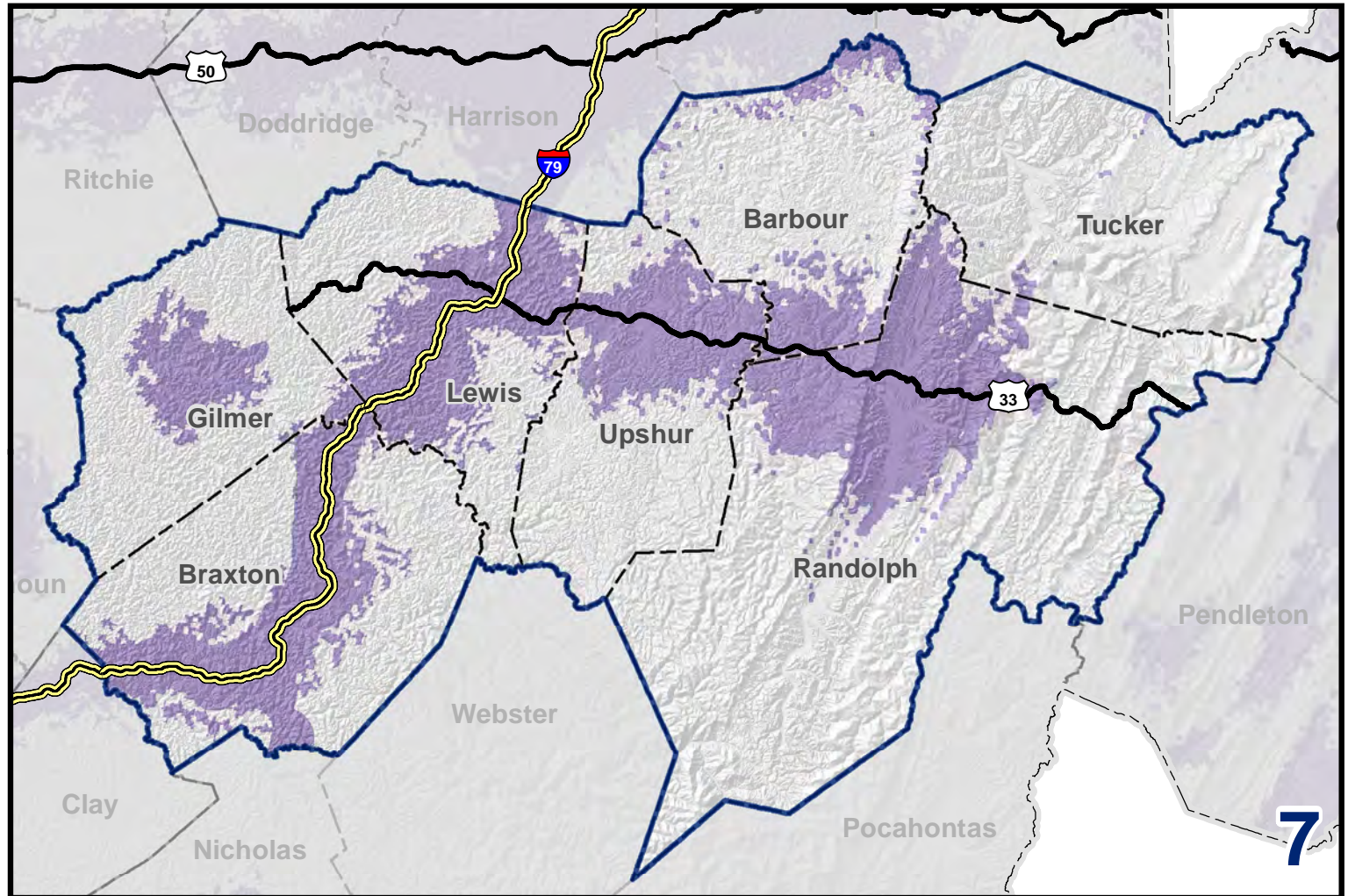
This publication represents interpretations of best available data made by professional geographers. As in all research work, professional interpretations may vary, and can change with advancements in both technology and data quality. This publication is offered as a service of the State of West Virginia; proper use of the information herein is the sole responsibility of the user.

Permission to reproduce this publication is granted if acknowledgement is given to the West Virginia Geological and Economic Survey.

Map Date: June 29, 2012  
Projection: Transverse Mercator  
Horizontal Datum: NAD 83  
Coordinate System: UTMz17n  
Map scale for full 8.5" x 11" display: 1:800,000

## Legend

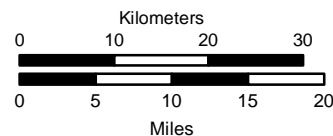
- Mobile Wireless
- Commerce Planning & Development Regions
- Counties
- Interstates
- US Highways



7



West Virginia Geological and Economic Survey  
Mont Chateau Research Center  
1 Mont Chateau Road  
Morgantown, WV 26508-8079  
Phone: (304) 594-2331  
www.wvgs.wvnet.edu



[www.wvbroadbandmap.org](http://www.wvbroadbandmap.org)

