

West Virginia Broadband Mapping Program Region 7 - FCC Unserved Fixed Broadband

Data as of 6/30/2014

Publications Policy:




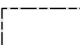


This publication represents interpretations of best available data made by professional geographers. As in all research work, professional interpretations may vary, and can change with advancements in both technology and data quality. This publication is offered as a service of the State of West Virginia; proper use of the information herein is the sole responsibility of the user.

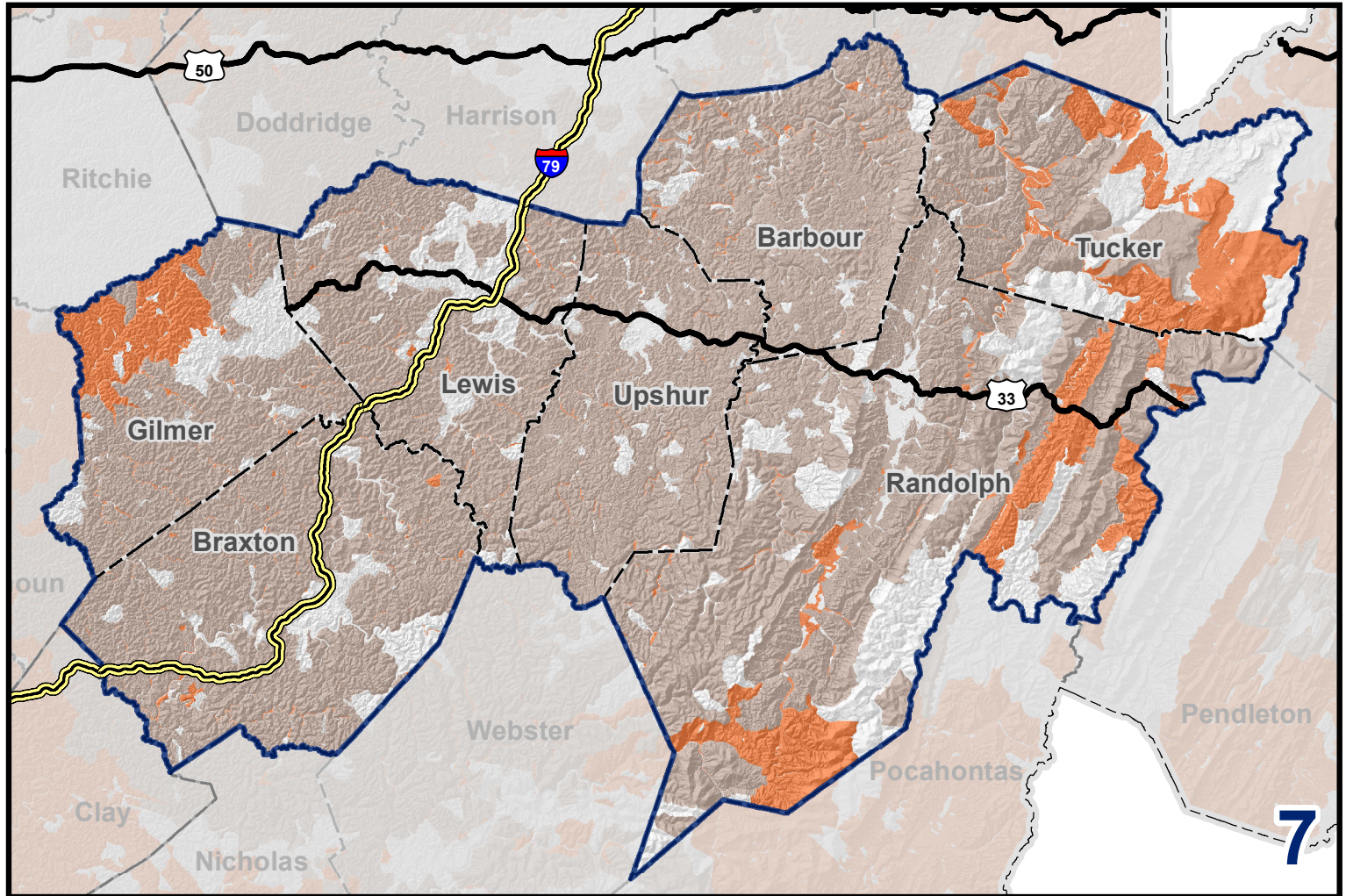
Permission to reproduce this publication is granted if acknowledgement is given to the West Virginia Geological and Economic Survey.

This map shows areas that are reported as unserved by fixed broadband with advertised speeds of 3 Mbps downstream and 768 kbps upstream.

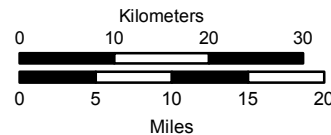
Map Date: January 29, 2016
Projection: Transverse Mercator
Horizontal Datum: NAD 83
Coordinate System: UTMz17n
Map scale for full 8.5" x 11" display: 1:800,000

Legend

-  Fixed BB Partially Unavailable
-  Fixed BB Unavailable
-  Commerce Planning & Development Regions
-  Counties
-  Interstates
-  US Highways



West Virginia Geological and Economic Survey
Mont Chateau Research Center
1 Mont Chateau Road
Morgantown, WV 26508-8079
Phone: (304) 594-2331
www.wvgs.wvnet.edu



www.wvbroadbandmap.org

