

# West Virginia

## Broadband Mapping Program

### Region 7 - Maximum Upload Speed, Wireless

Data as of 6/30/2014

**Publications Policy:**

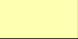


This publication represents interpretations of best available data made by professional geographers. As in all research work, professional interpretations may vary, and can change with advancements in both technology and data quality. This publication is offered as a service of the State of West Virginia; proper use of the information herein is the sole responsibility of the user.

Permission to reproduce this publication is granted if acknowledgement is given to the West Virginia Geological and Economic Survey.

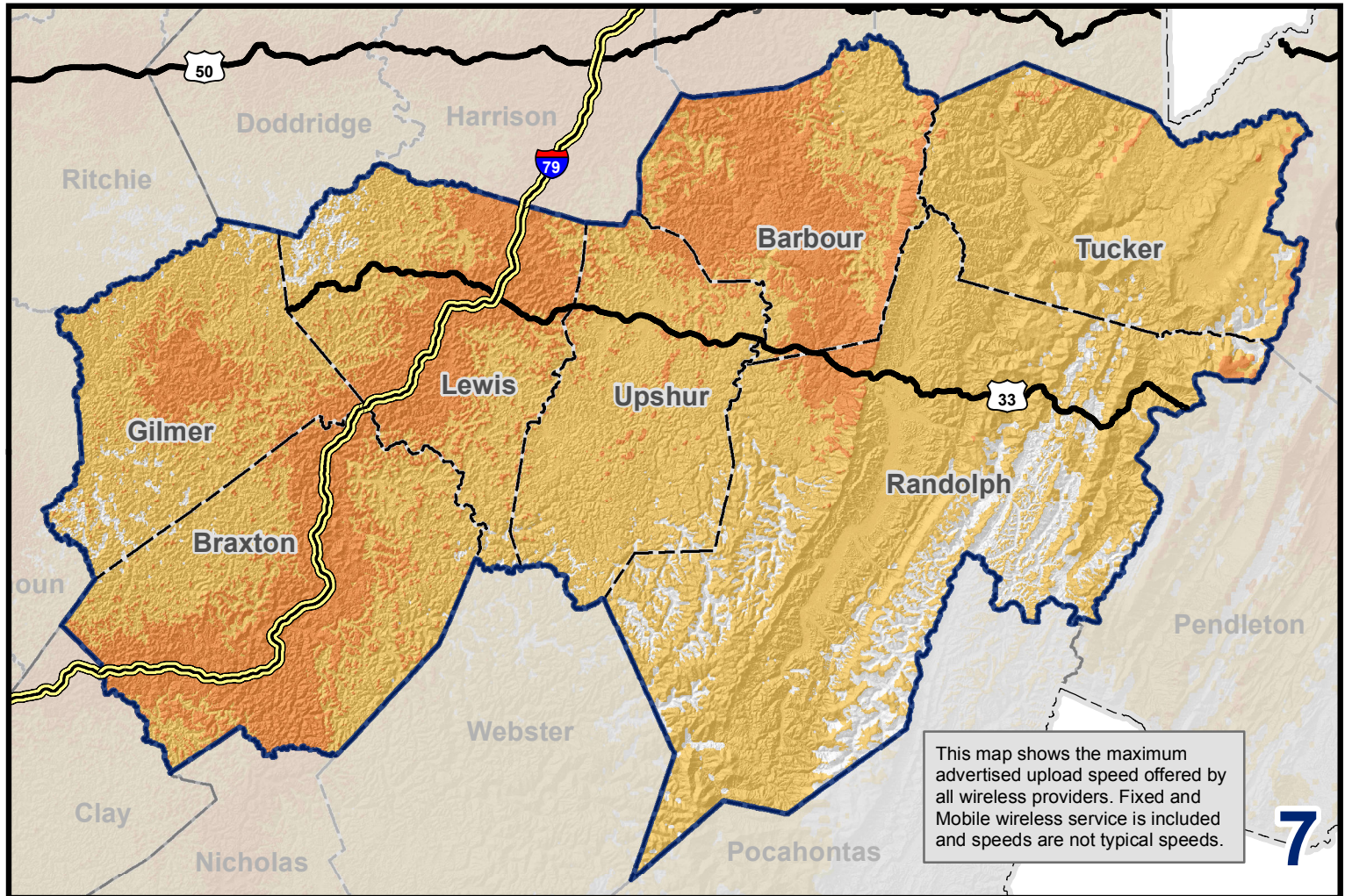
Map Date: January 29, 2016  
 Projection: Transverse Mercator  
 Horizontal Datum: NAD 83  
 Coordinate System: UTMz17n  
 Map scale for full 8.5" x 11" display: 1:800,000

### Legend

**Maximum Upload Speed, Wireless**

-  200 kbps - 768 kbps
-  768 kbps - 3 mbps
-  3 mbps - 10 mbps

-  Commerce Planning & Development Regions
-  Counties
-  Interstates
-  US Highways

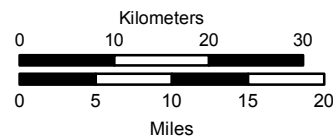


This map shows the maximum advertised upload speed offered by all wireless providers. Fixed and Mobile wireless service is included and speeds are not typical speeds.

**7**



West Virginia Geological and Economic Survey  
 Mont Chateau Research Center  
 1 Mont Chateau Road  
 Morgantown, WV 26508-8079  
 Phone: (304) 594-2331  
[www.wvgs.wvnet.edu](http://www.wvgs.wvnet.edu)



[www.wvbroadbandmap.org](http://www.wvbroadbandmap.org)

