

Appendix 8-D. CT scans for the Fred Barth No. 3 core

Computed Tomography of Utica (Barth Well)

Data-Set Description

- 5 Sections were scanned with an Industrial CT-Scanner; Section 5468 & 5659 were split into A and B.
- Raw data is available via the slices folder under each subsection.
- Cropped data, in the form of a .tiff stack, is available for each sample. These samples were delineated via best edge approximation and untilting of the core sample.
- X & Y planar slices were created for each data set as well as a montage to represent the true variability in the cores. These images are available in the proceeding sections (cropped & modified) and in their raw format under each main sample folder.

Utica (Barth) (5648A Ft)

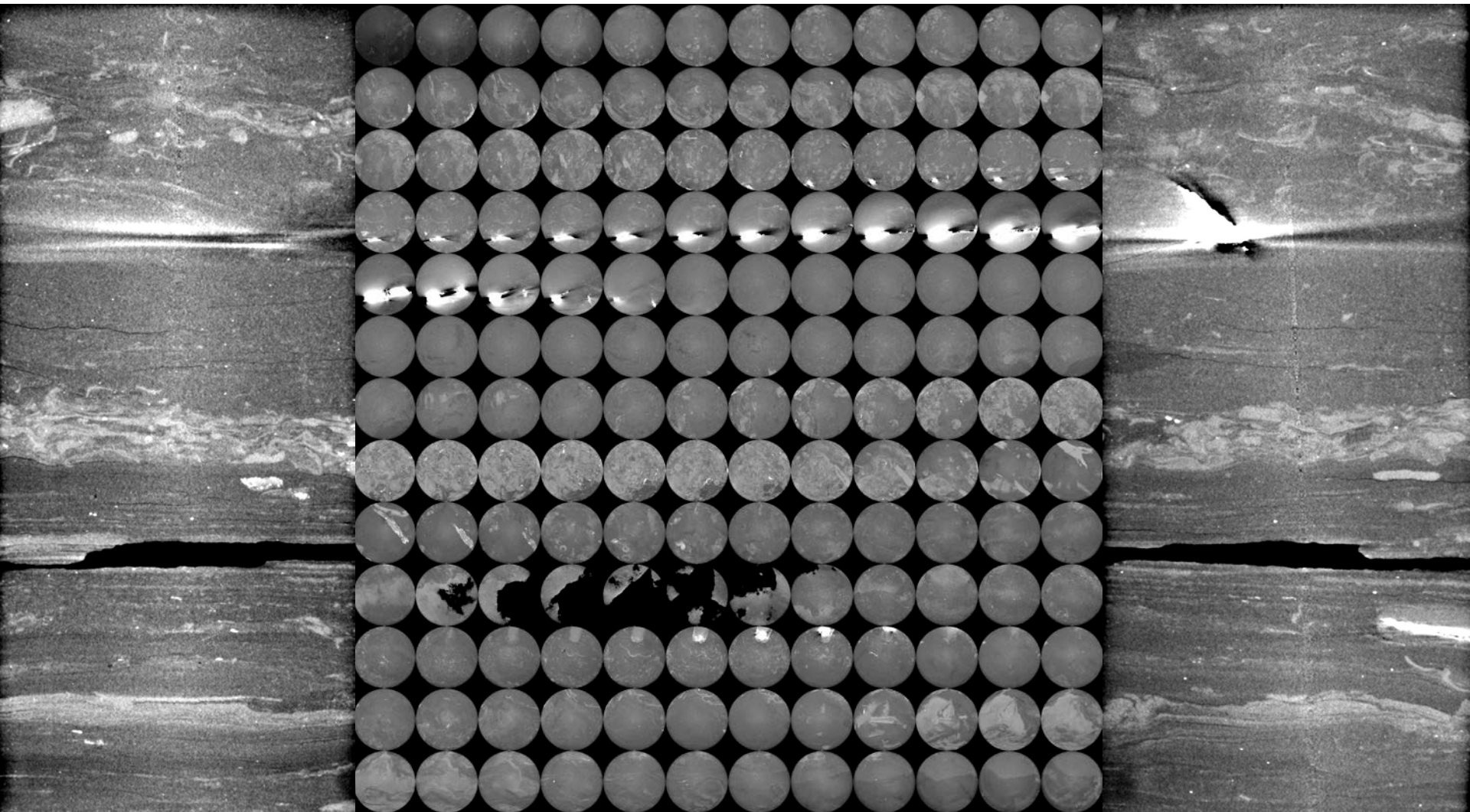
Resolution: 34.6 μm

Number of Slices: 1636

Middle Y Slice

Montage of Z Slices Through Core (156 Slices)

Middle X Slice

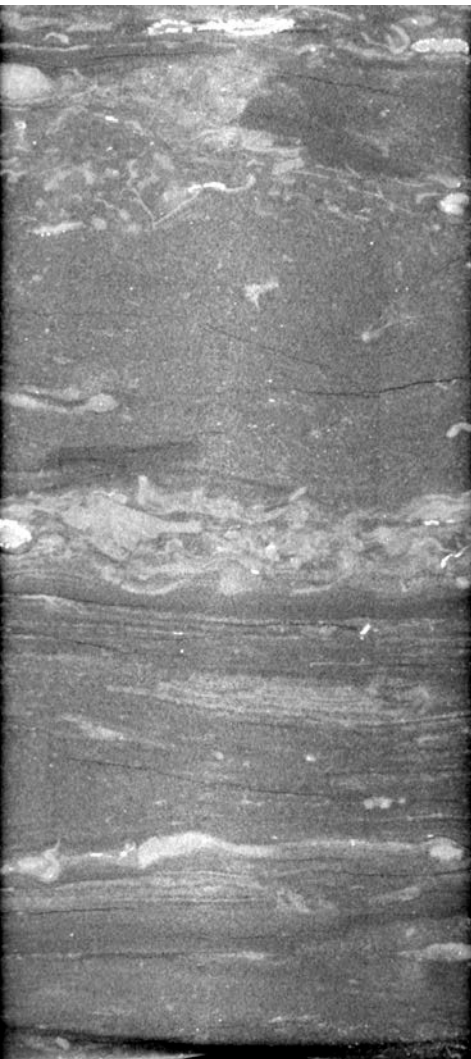


Utica (Barth) (5648B Ft)

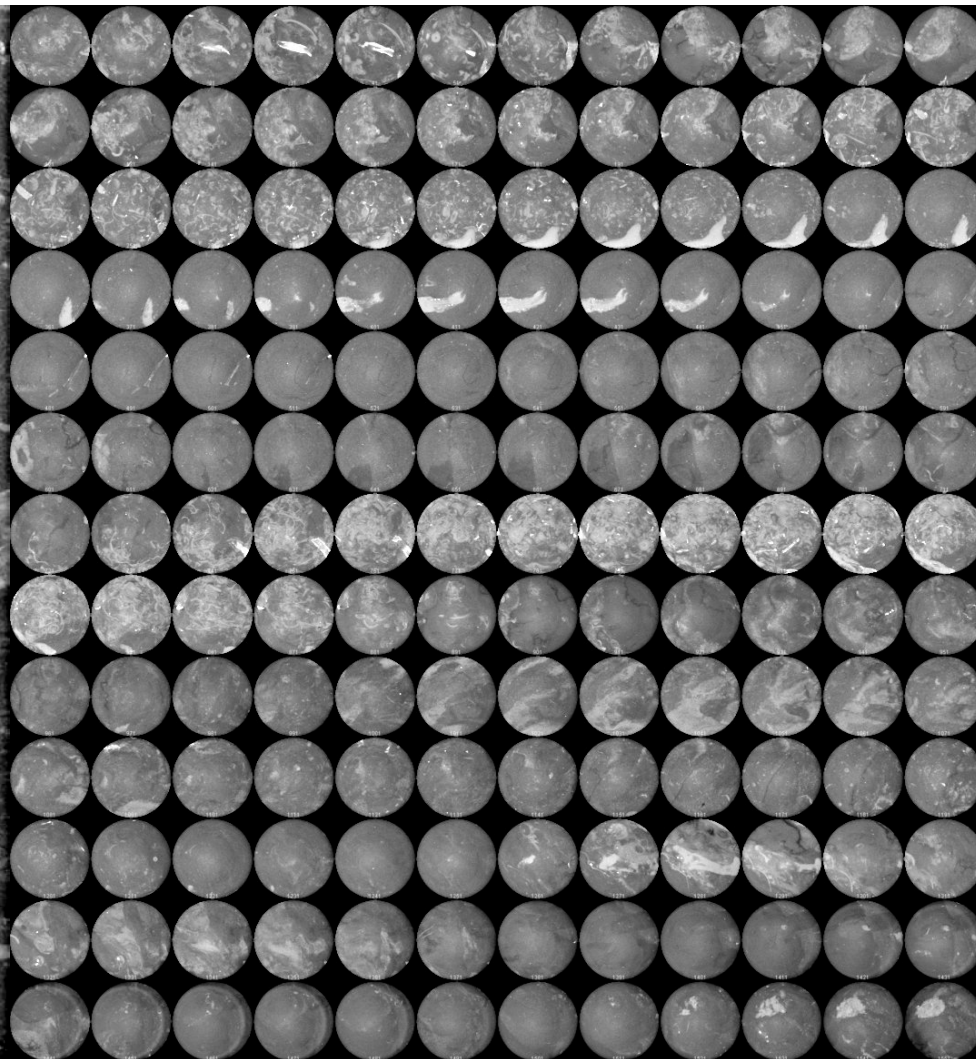
Resolution: 34.6 μm

Number of Slices: 1600

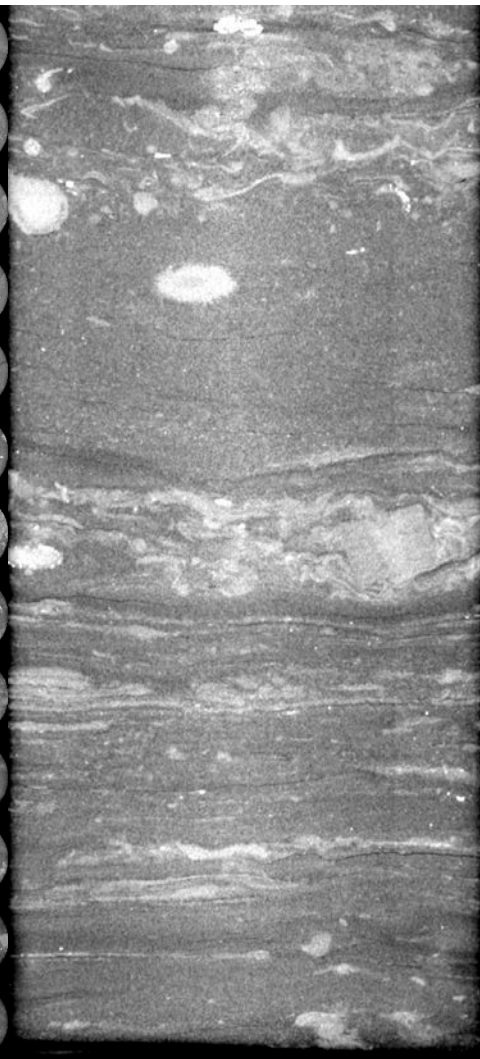
Middle Y Slice



Montage of Z Slices Through Core (156 Slices)



Middle X Slice



Utica (BarthA) (5659A Ft)

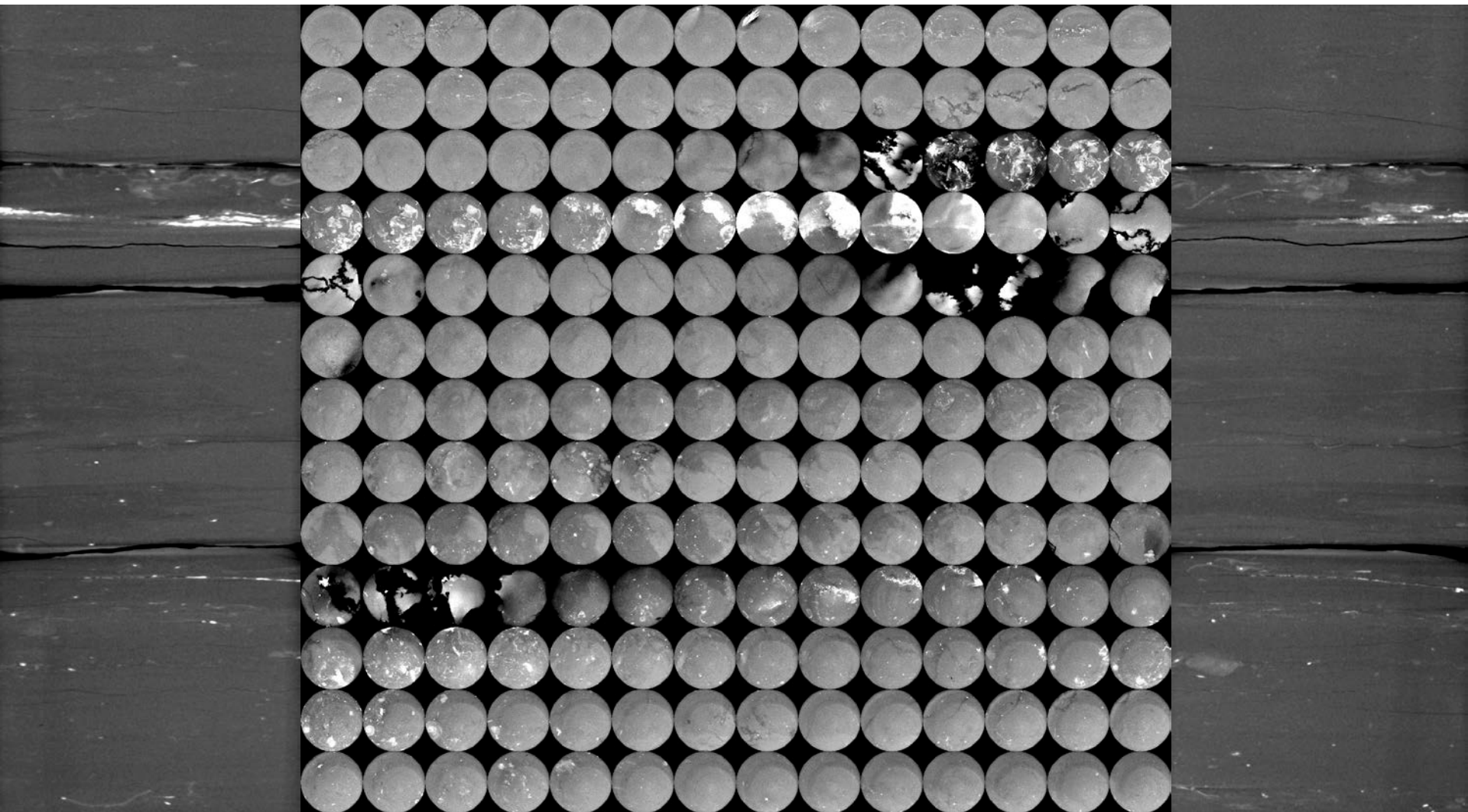
Resolution: 45.4 μm

Number of Slices: 1700

Middle Y Slice

Montage of Z Slices Through Core (182 Slices)

Middle X Slice



Utica (BarthA) (5659B Ft)

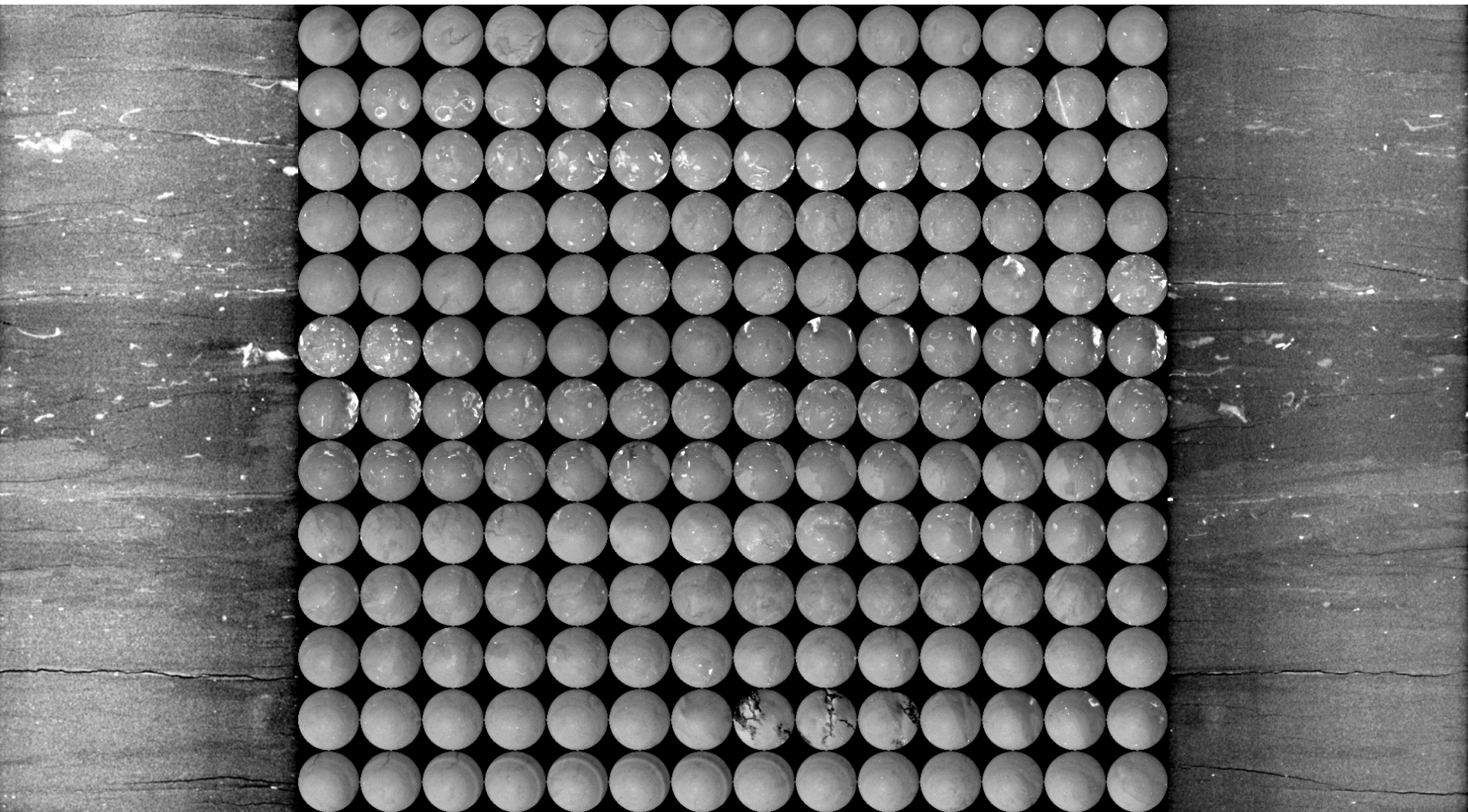
Resolution: 37.1 μm

Number of Slices: 1760

Middle Y Slice

Montage of Z Slices Through Core (182 Slices)

Middle X Slice

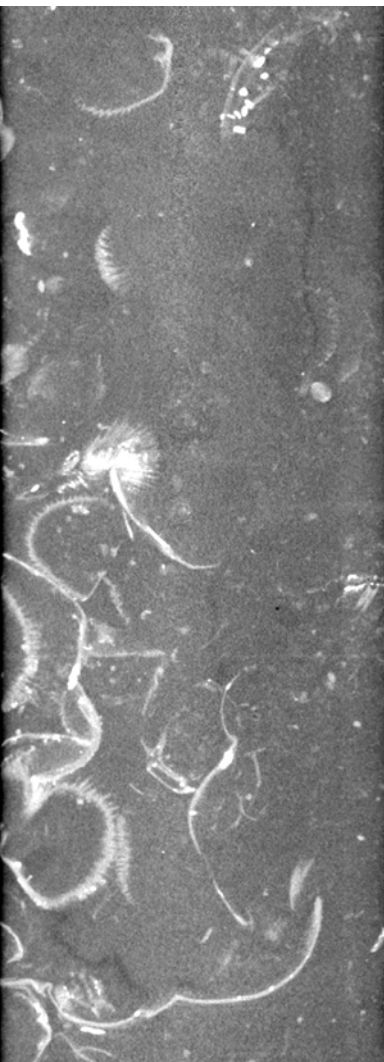


Utica (BarthA) (5672 Ft): Sample subcored along bedding planes

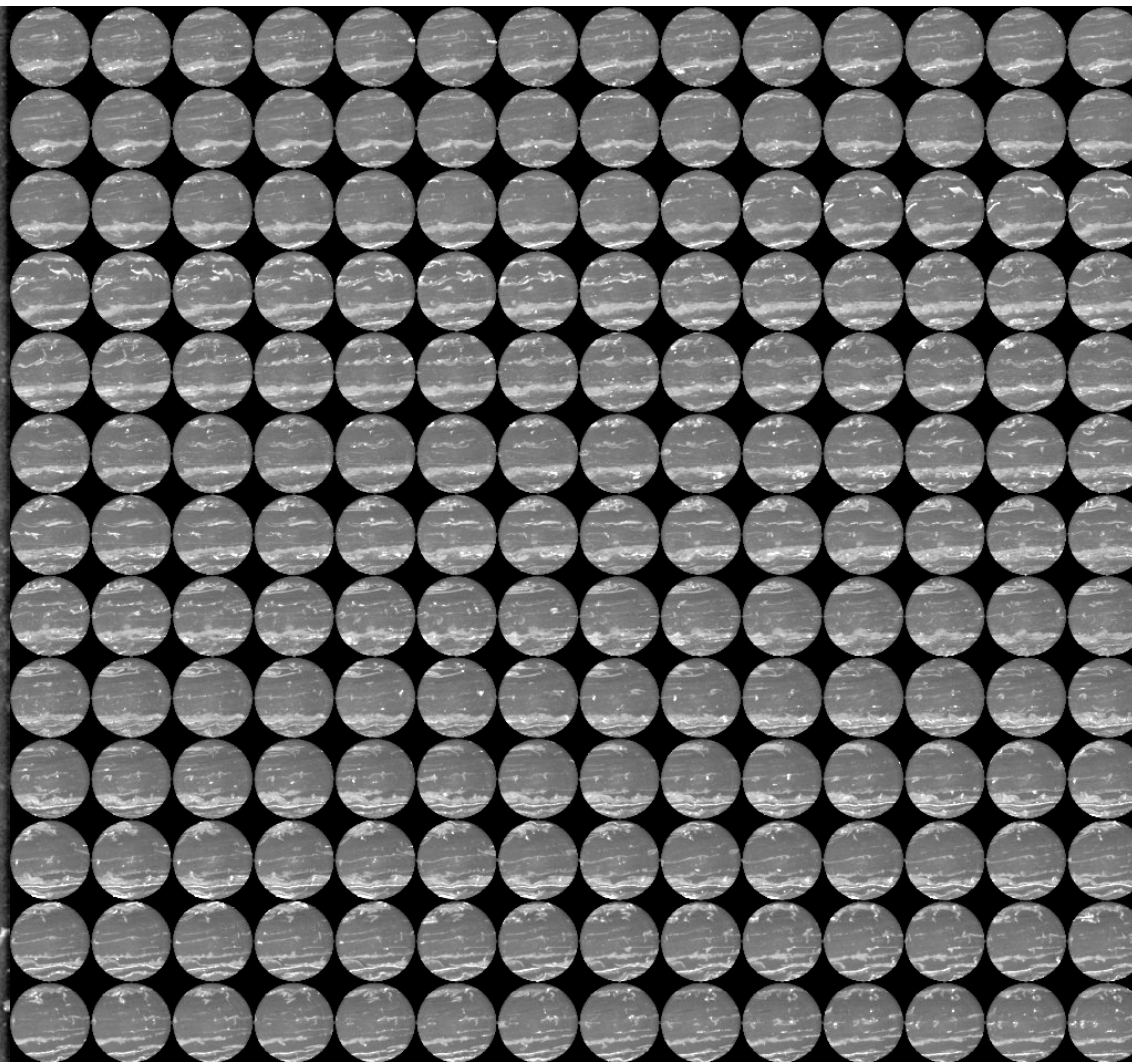
Resolution: 42 μm

Number of Slices: 1700

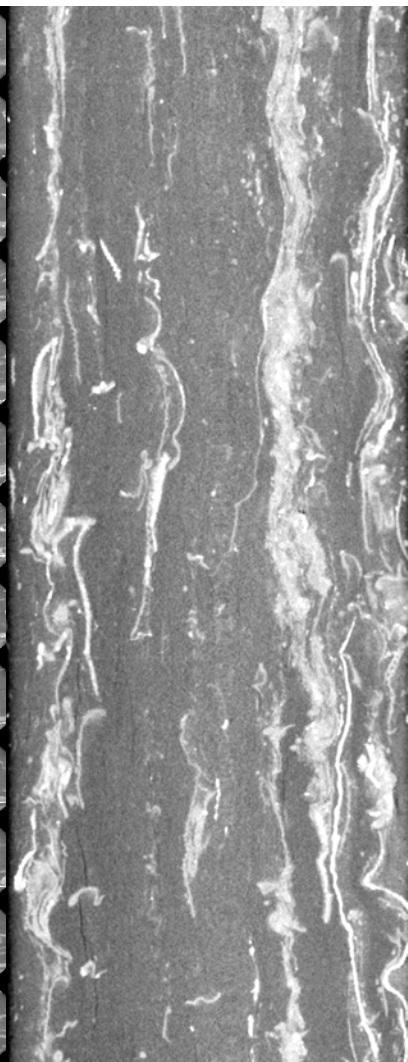
Middle Y Slice



Montage of Z Slices Through Core (182 Slices)



Middle X Slice

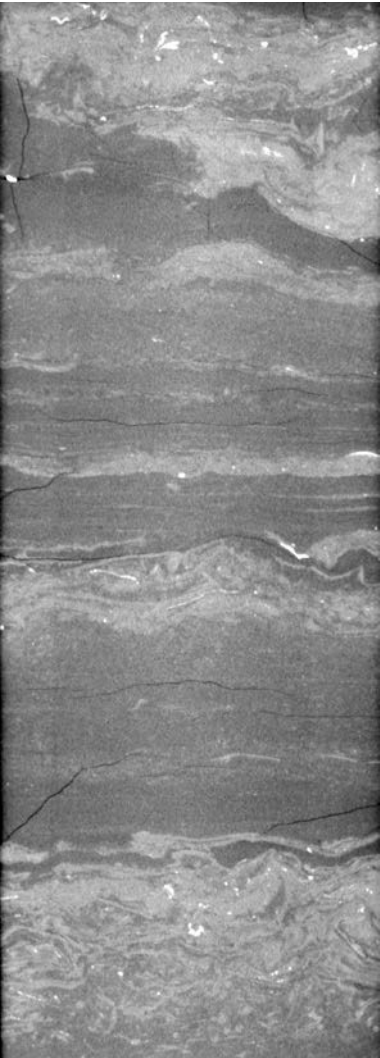


Utica (BarthA) (5714 Ft)

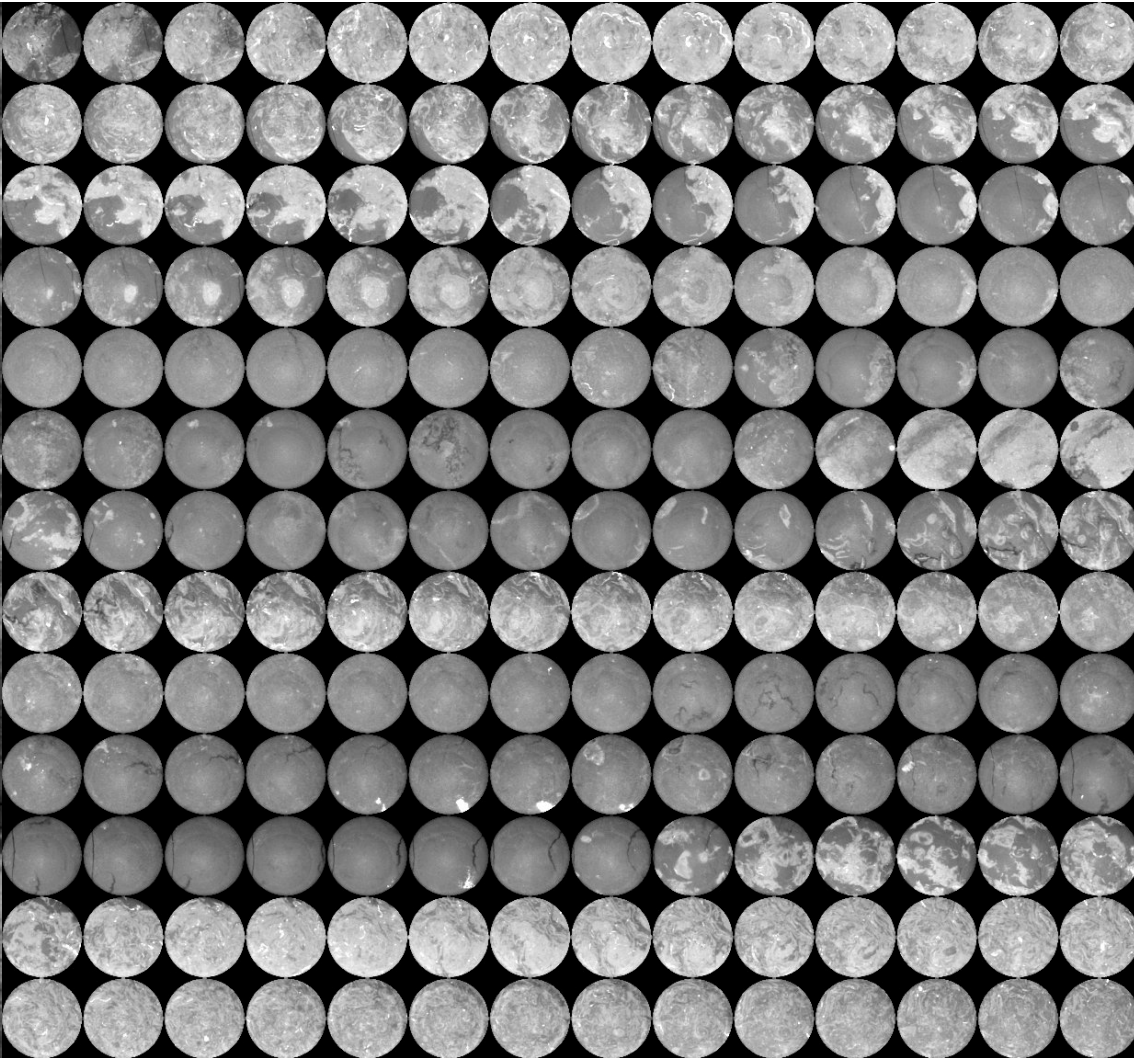
Resolution: 35 μm

Number of Slices: 1690

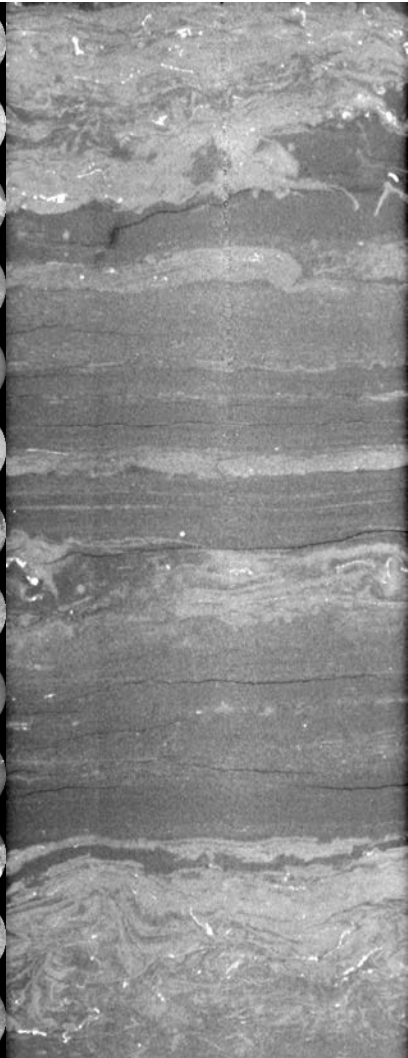
Middle Y Slice



Montage of Z Slices Through Core (182 Slices)



Middle X Slice



Utica (BarthA) (5714 Ft)

Resolution: 44.9 μm

Number of Slices: 1630

Middle Y Slice

Montage of Z Slices Through Core (182 Slices)

Middle X Slice

