



# Marcellus Formation in West Virginia

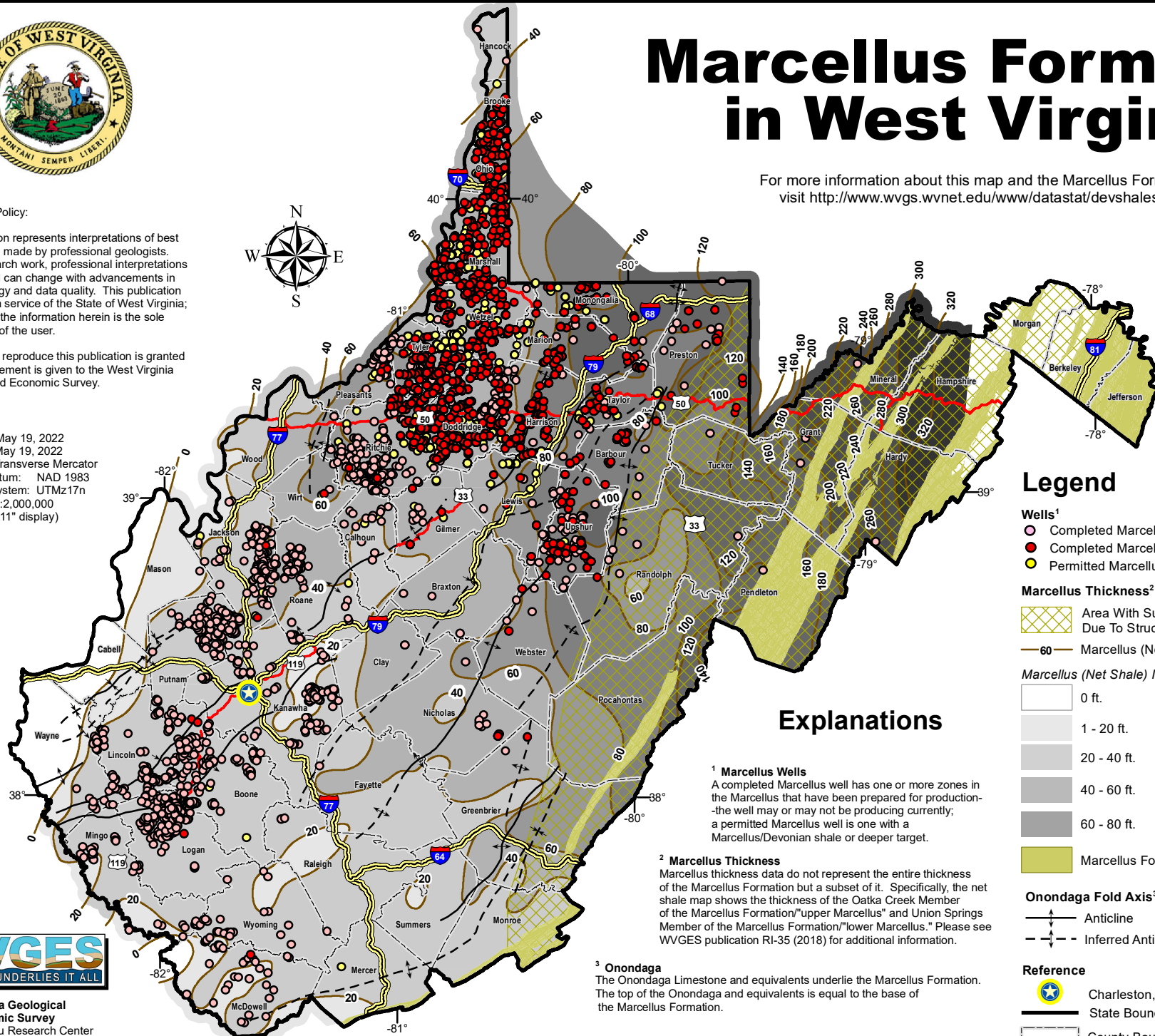
For more information about this map and the Marcellus Formation, visit <http://www.wvgs.wvnet.edu/www/datastat/devshales.htm>

**Publications Policy:**

This publication represents interpretations of best available data made by professional geologists. As in all research work, professional interpretations may vary, and can change with advancements in both technology and data quality. This publication is offered as a service of the State of West Virginia; proper use of the information herein is the sole responsibility of the user.

Permission to reproduce this publication is granted if acknowledgement is given to the West Virginia Geological and Economic Survey.

Map Date: May 19, 2022  
 Data Date: May 19, 2022  
 Projection: Transverse Mercator  
 Horizontal Datum: NAD 1983  
 Coordinate System: UTMz17n  
 Map Scale: 1:2,000,000  
 (for full 8.5" x 11" display)



## Legend

- Wells<sup>1</sup>**
- Completed Marcellus Vertical Wells<sup>1</sup>
  - Completed Marcellus Deviated Wells<sup>1</sup>
  - Permitted Marcellus Wells<sup>1</sup>
- Marcellus Thickness<sup>2</sup> and Onondaga Structure<sup>3</sup>**
- Area With Suspect Thicknesses Due To Structure
  - 60 Marcellus (Net Shale) Isochore (Lines, Labels)
- Marcellus (Net Shale) Isochore (Colorfill)**
- |             |               |
|-------------|---------------|
| 0 ft.       | 80 - 100 ft.  |
| 1 - 20 ft.  | 100 - 200 ft. |
| 20 - 40 ft. | 200 - 300 ft. |
| 40 - 60 ft. | Over 300 ft.  |
| 60 - 80 ft. |               |
- Marcellus Formation and Older Outcrops
- Onondaga Fold Axis<sup>3</sup>**
- |                    |                   |
|--------------------|-------------------|
| Anticline          | Syncline          |
| Inferred Anticline | Inferred Syncline |

## Explanations

- <sup>1</sup> Marcellus Wells**  
 A completed Marcellus well has one or more zones in the Marcellus that have been prepared for production—the well may or may not be producing currently; a permitted Marcellus well is one with a Marcellus/Devonian shale or deeper target.
- <sup>2</sup> Marcellus Thickness**  
 Marcellus thickness data do not represent the entire thickness of the Marcellus Formation but a subset of it. Specifically, the net shale map shows the thickness of the Oatka Creek Member of the Marcellus Formation/"upper Marcellus" and Union Springs Member of the Marcellus Formation/"lower Marcellus." Please see WVGES publication RI-35 (2018) for additional information.
- <sup>3</sup> Onondaga**  
 The Onondaga Limestone and equivalents underlie the Marcellus Formation. The top of the Onondaga and equivalents is equal to the base of the Marcellus Formation.



West Virginia Geological and Economic Survey  
 Mont Chateau Research Center  
 1 Mont Chateau Road  
 Morgantown, WV 26508-8079  
 Phone: (304) 594-2331  
[www.wvgs.wvnet.edu](http://www.wvgs.wvnet.edu)

