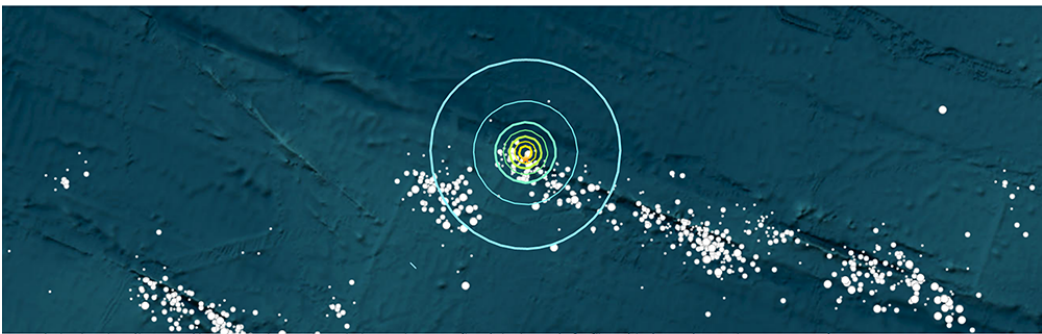


6.2 Mag. Quake, Pacific-Antarctic Ridge, Pacific Ocean - 6/9/2024

M 6.2 - Pacific-Antarctic Ridge
2024-06-09 09:55:49 (UTC) | 53.658°S 133.989°W | 10.0 km depth



Administrative Region

Data not available.

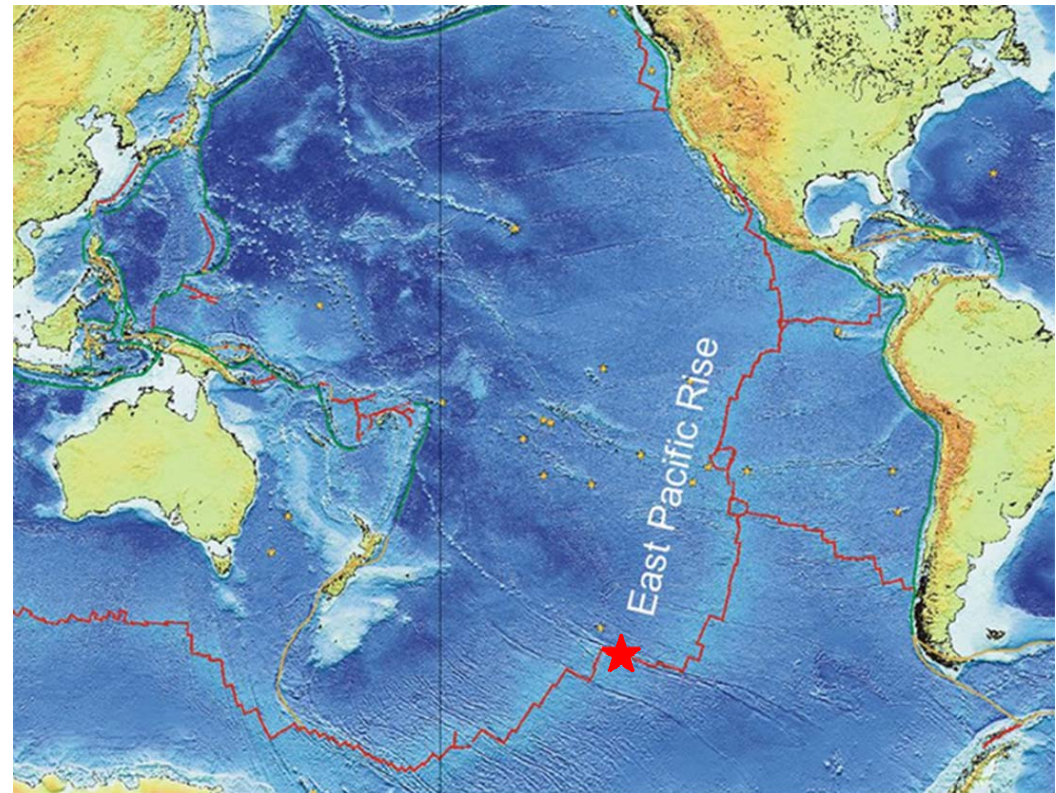
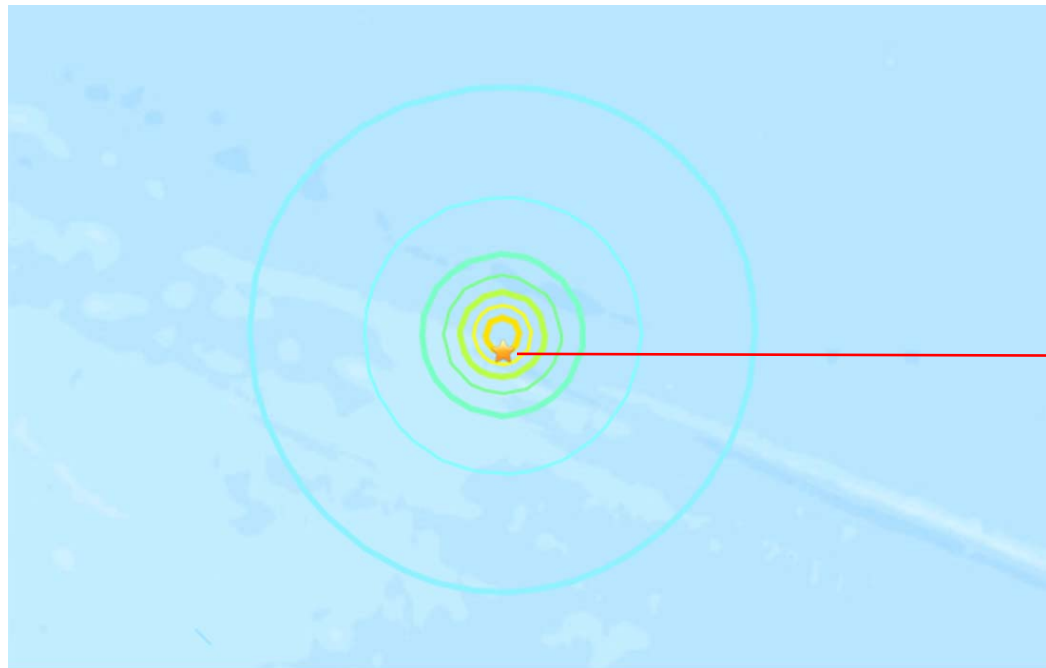
Nearby Places

Place	Distance from epicenter	Population
Waikangi, Chatham Islands, New Zealand	3204 km (2002.2 mi) W	Population: 300
Masterton, Wellington, New Zealand	3887.7 km (2415.7 mi) W	Population: 29000
Carterton, Wellington, New Zealand	3995.8 km (2482.2 mi) W	Population: 10250
Gisborne, Gisborne, New Zealand	3998.4 km (2482.3 mi) W	Population: 37300
Hastings, Hawke's Bay, New Zealand	3992.2 km (2482.7 mi) W	Population: 50600

Distance and direction from epicenter to nearby places.
Nearby place information was automatically generated from [GeoNames](#). The list includes populated places, not necessarily cities. If this information is inaccurate, please consider [updating the GeoNames database](#).

Tectonic Summary

Data not available.



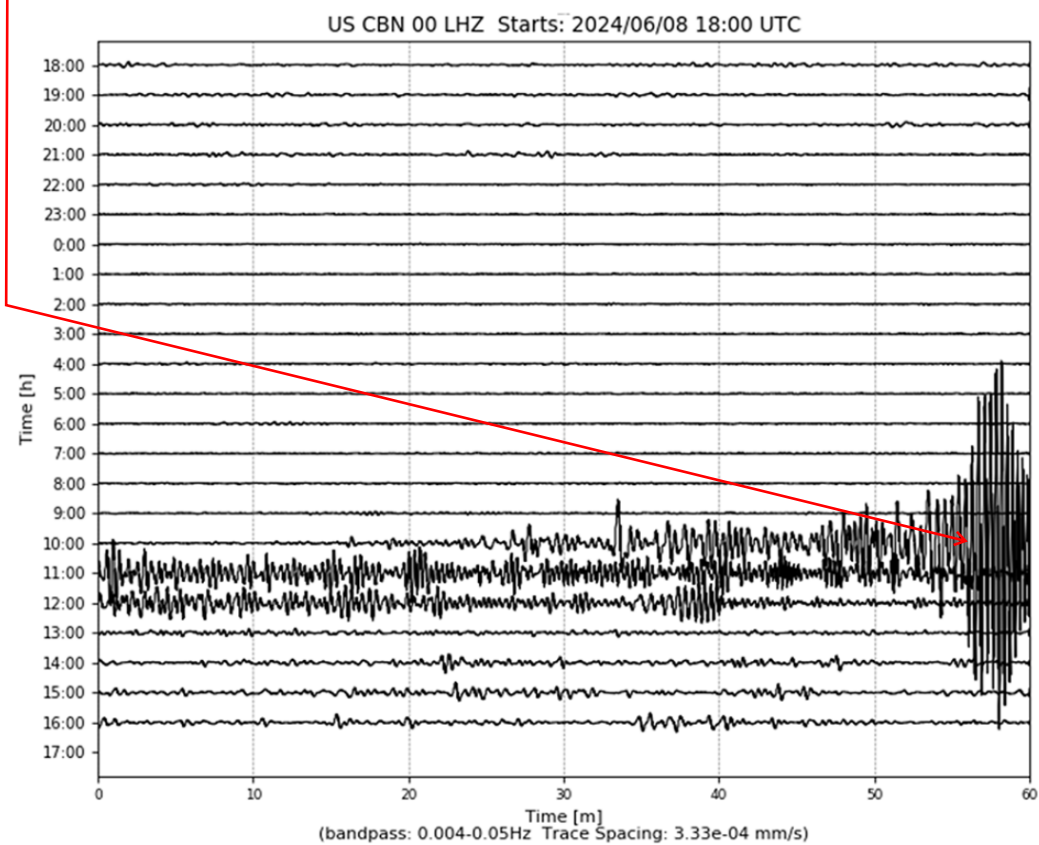
Felt Report - Tell Us!

0 0 0 0 0 0

Responses

Contribute to citizen science.
Please [tell us](#) about your experience.

Citizen Scientist Contributions



Large (6.2 Mag.), shallow (10 Km) offshore quake. Felt by no one.