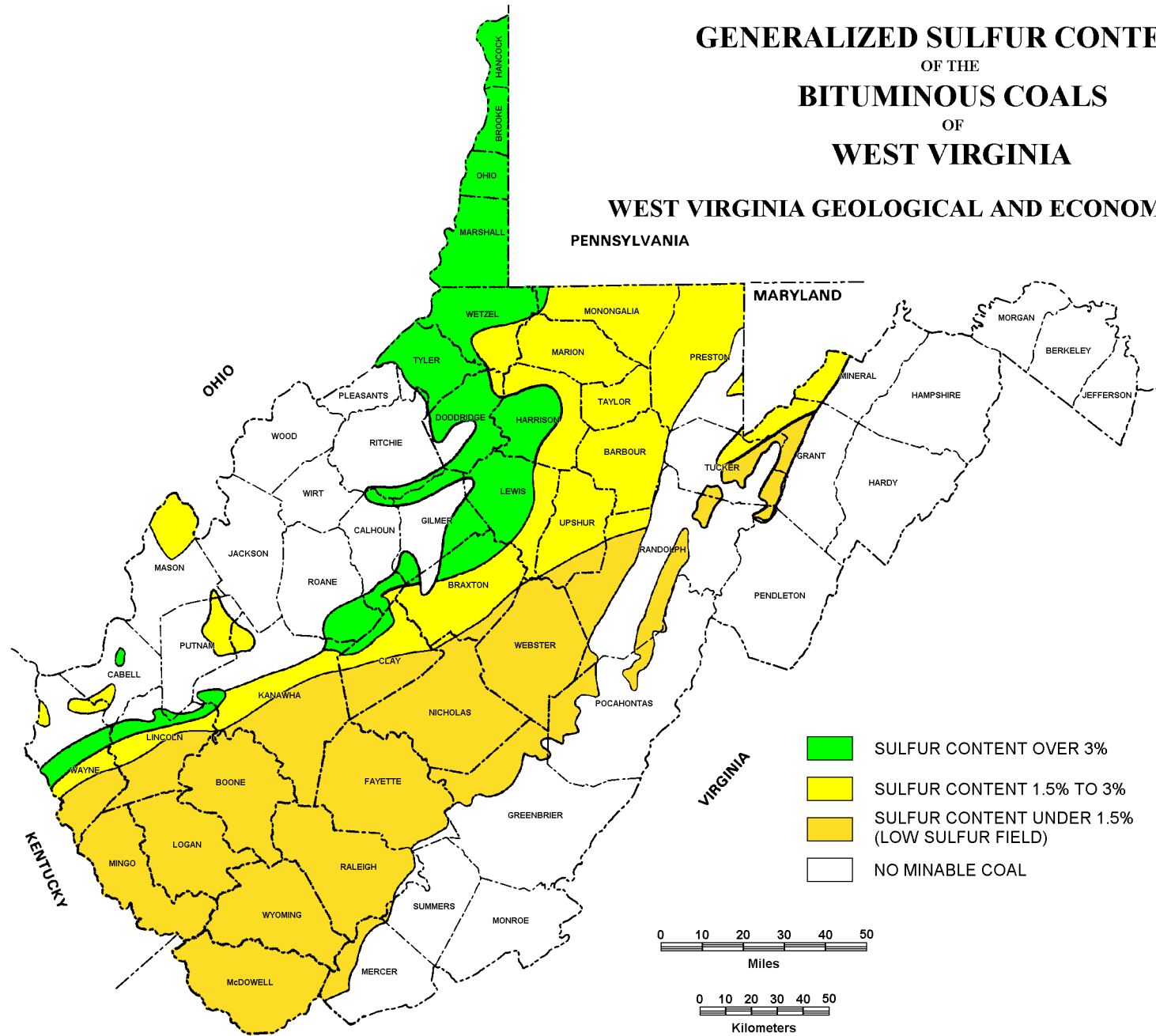


# GENERALIZED SULFUR CONTENT OF THE BITUMINOUS COALS OF WEST VIRGINIA

WEST VIRGINIA GEOLOGICAL AND ECONOMIC SURVEY



- SULFUR CONTENT OVER 3%
- SULFUR CONTENT 1.5% TO 3%
- SULFUR CONTENT UNDER 1.5%  
(LOW SULFUR FIELD)
- NO MINABLE COAL

